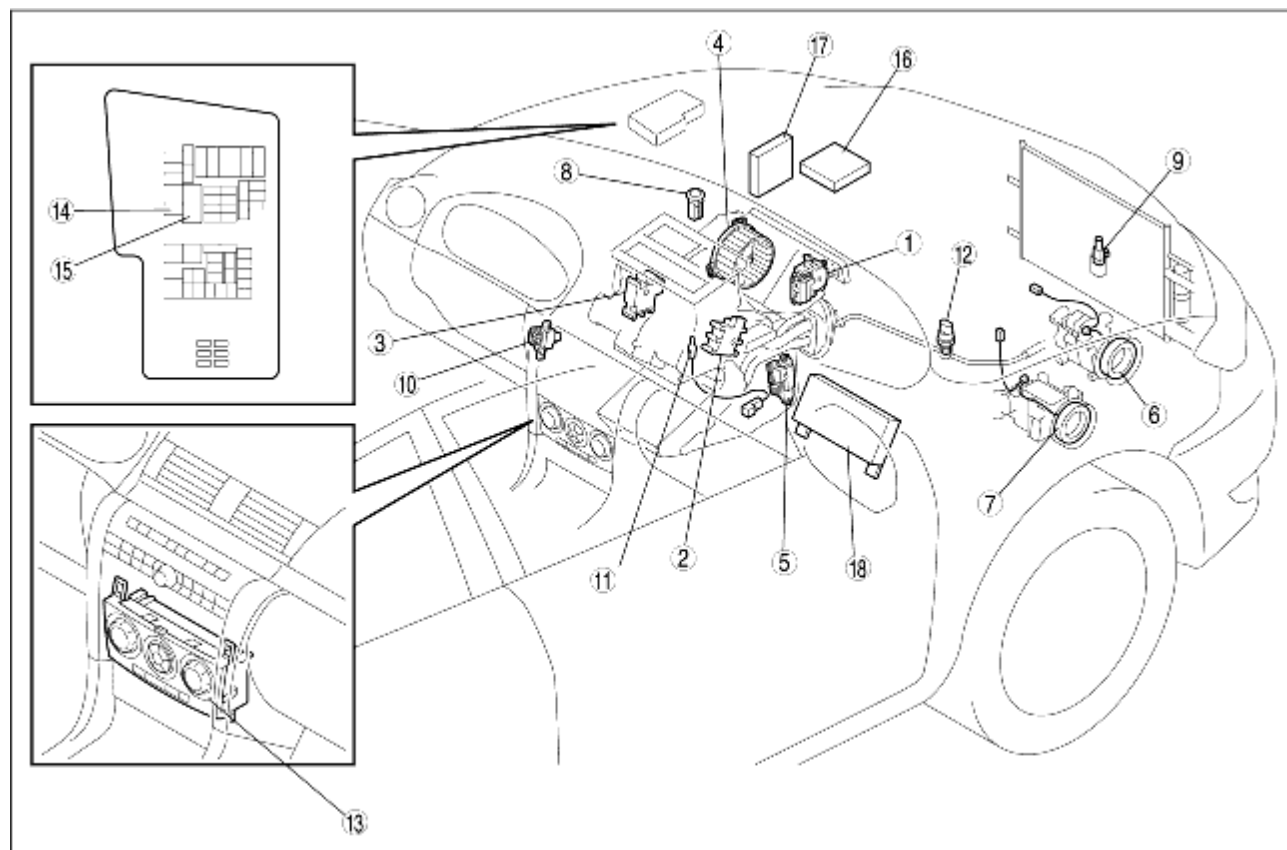


CONTROL SYSTEM STRUCTURAL VIEW [FULL-AUTO AIR CONDITIONER]

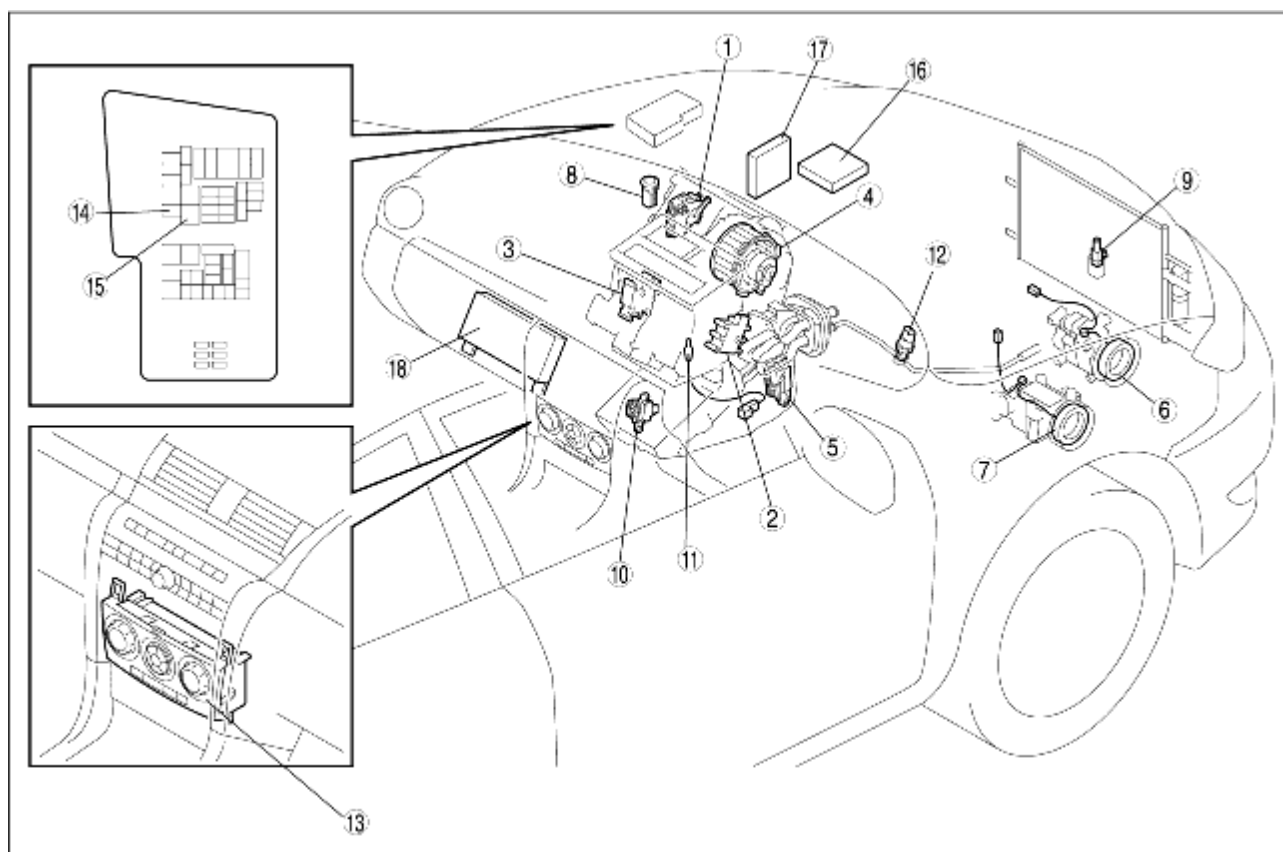
B3E074001040T02

L.H.D.



B3E0740T001

R.H.D.



B3E07-40T401

| | |
|----|-------------------------------|
| 1 | Air intake actuator |
| 2 | Air mix actuator |
| 3 | Airflow mode actuator |
| 4 | Blower motor |
| 5 | Power MOS FET |
| 6 | Magnetic clutch (Z6, ZJ) |
| 7 | Magnetic clutch (LF) |
| 8 | Solar radiation sensor |
| 9 | Ambient temperature sensor |
| 10 | Cabin temperature sensor |
| 11 | Evaporator temperature sensor |
| 12 | Refrigerant pressure switch |
| 13 | Climate control unit |
| 14 | A/C relay |
| 15 | Blower relay |
| 16 | PCM (Z6, ZJ) |
| 17 | PCM (LF) |
| 18 | PJB |